

How to Fast-track FRA Inspections

Also in this Issue: Get ready now for cold weather concrete and masonry construction; GCI adds superflat floor profiling

How to Fast-track FRA Inspections

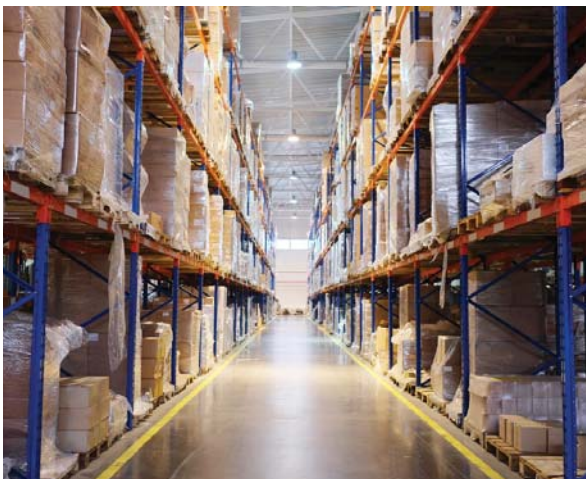
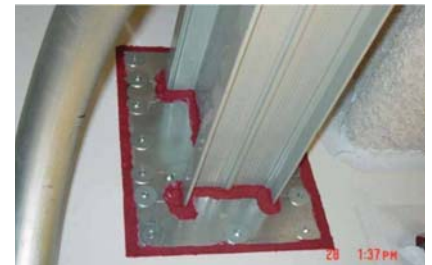
The dramatic growth in Downtown Columbus has greatly increased the demand on city inspectors tasked with framing and safety inspections for building construction and renovations. To provide timely inspections for clients, contractors and property owners, in 2015 the City of Columbus Inspection Department approved GCI to perform FRA inspections in lieu of the City's inspectors.

GCI's flexibility keeps Columbus projects on schedule

Many contractors and developers have experienced the frustration of an inspection ending as soon as an unacceptable element is discovered because the inspector must go on to the next jobsite. GCI's FRA inspectors have more schedule flexibility and can stay onsite at the request of the contractor while the issue is corrected or return much sooner than city inspectors can typically accommodate. Instead of losing several days waiting for a re-inspection, GCI can respond within hours when the contractor is ready.

GCI's FRA inspections include wall, floor and ceiling fastening as well as fire-resistant joints and penetrations.

For more information about GCI's Fire Rated Assembly (FRA) Inspection services, contact Glenn McLaughlin at 614.572.8634.



GCI adds superflat floor profiling

In addition to FF/FL testing for random traffic floors, GCI now performs Fmin profiling for more critical floors commonly known as "defined traffic floors." These specifications are generally +75 FF. Defined traffic floors are typically high rack, narrow aisles where picking equipment travels the same path consistently. Fmin superflat testing is performed using a D-Meter instead of the traditional F-Meter which tests for floor flatness (FF) and floor levelness (FL). The report shows highs and lows and provides grinding locations to bring the floor within specification.

Get ready now for cold weather concrete and masonry construction

Central Ohio has enjoyed an unusually warm fall, but contractors and developers need to be prepared for the weather to change abruptly to more seasonably cold or freezing temperatures. While concrete can be poured and masonry walls constructed in nearly all kinds of weather, contractors should plan now to have proper protective measures in place so work can successfully continue with quality outcomes.

Revisit the following references to brush up on Cold Weather Concrete Placement or Recommended Construction Practices and Protection for Cold Weather Masonry.



<http://www.gci2000.com/newsletters/2015-01-cold-weather-concrete-placement.pdf>

<http://www.gci2000.com/newsletters/2016-01-cold-weather-masonry-practices-protection.pdf>

Jason Alsept joins GCI Steel & Special Inspections Department

Jason Alsept recently joined GCI's Steel & Special Inspections Department as an NDE Technician. Jason has over 16 years of welding inspection experience.

Along with his colleagues, Jason provides welding and fabrication inspection, and NDE inspection. The department also provides Special Inspections including Fire Rated Assemblies (FRA), bolt and anchor torques, fireproofing, intumescent coatings, paint thickness, concrete humidity measurement, and anchor pull testing.

For more information about GCI's construction inspection services, contact Bob Hiles at 614.895.1400.